

SHOCK ABSORBERS

2" - 30"

Order code	DTH Hammer	Top connector	Bottom connector	Outside diameter		Length		Weight
				[mm]	[in]	[mm]	[in]	
Shock Absorber 2"	2"	23/8 reg pin	23/8 reg box	62,0	2.441	346	13.622	7,5
Shock Absorber 3"	3"	23/8 reg pin	23/8 reg box	79,4	3.126	457	17.992	14,3
Shock Absorber 4"	4"	23/8 reg pin	23/8 reg box	95,4	3.756	483	19.016	22,1
Shock Absorber 5"	5"	3½ reg pin	3½ reg box	115,0	4.528	514	20.236	33,2
Shock Absorber 6"	6"	3½ reg pin	3½ reg box	140,0	5.512	578	22.756	53,0
Shock Absorber 8"	8"	4½ reg pin	4½ reg box	178,0	7.008	591	23.268	84,0
Shock Absorber 10"	10"	65/8 reg pin	65/8 reg box	216,0	8.504	635	25.000	98,0
Shock Absorber 12"	12" - 14"	65/8 reg pin	65/8 reg box	254,0	10.000	V724	28.504	229,0
Shock Absorber 18"	18" - 24"	85/8 reg pin	85/8 reg box	406,0	15.984	711	27.992	598,0
Shock Absorber 30"	24" - 33"	10" Beco male	10" Beco female	508,0	20.000	950	37.402	1256,0



Shock Absorbers

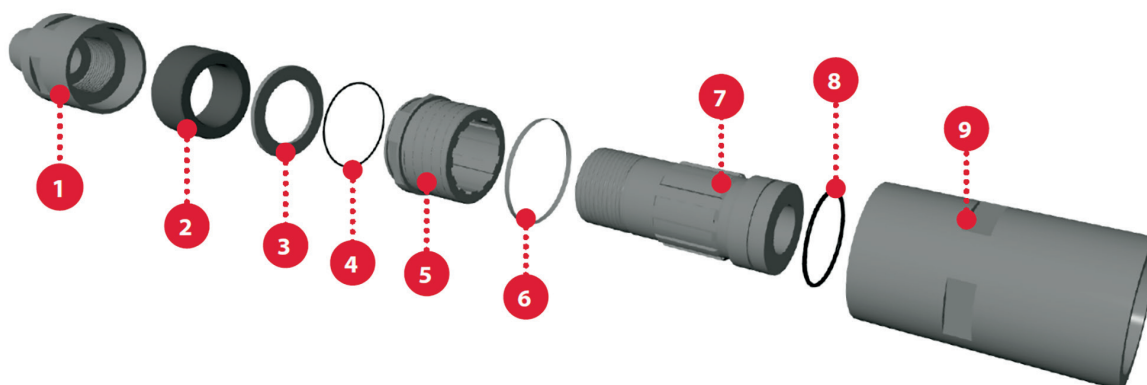
2"- 6" Shock Absorbers



Size	HDSA2	HDSA3	HDSA4	HDSA5	HDSA6
Effective length	346 mm / 13.62"	457 mm / 17.93"	483 mm / 19.02"	514 mm / 20.27"	578 mm / 22.76"
Outside diameter	62 mm / 2.44"	79.4 mm / 3.13"	95.4 mm / 3.76"	115 mm / 4.53"	140 mm / 5.51"
Net weight	7,5 kg / 16.5 lbs	14,3 kg / 31.5 lbs	22,1 kg / 48.7 lbs	33,2 kg / 73.2 lbs	53,0 kg / 116.8 lbs

Ref	Description	Part number				
		HDSA2	HDSA3	HDSA4	HDSA5	HDSA6
1	Top connector	SA02HD0810F	"SA03HD0801M (2 3/8" reg. pin)"	"SA04HD0801M (2 3/8" reg. pin)"	"SA05HD0803M (3 1/2" reg. pin)"	"SA06HD0803M (3 1/2" reg. pin)"
2	Seal 'O' ring*	N / A	SA03HD03	SA04HD03	SA05HD03	SA06HD03 (2 of)*
3	Splined Nut	HSB2837ST	SA03HD01	SA04HD01	SA05HD01	SA06HD01
4	Breakout washer	N / A	SA03HD25	SA04HD25	SA05HD25	SA06HD25
5	Splined Nut Seal	SA02HD10	SA03HD10	SA04HD10	SA05HD10	SA06HD10
6	Retainer ring	HSB2S37ST	SA03HD011	SA04HD011	SA05HD011	SA06HD011
7	Thrust guide	SA02HD12	SA03HD12	SA04HD12	SA05HD12	SA06HD12
8	Thrust guide'O' ring	SA02HD12A	SA03HD12A	SA04HD12A	SA05HD12A	SA06HD12A
9	Buffer x 2**	SA02HD05 (1 of)**	SA03HD05	SA04HD05	SA05HD05	SA06HD05
10	Bottom connector	SA02HD0911M	"SA03HD0901F (2 3/8" reg. box)"	"SA04HD0901F (2 3/8" reg. box)"	"SA05HD0903F (3 1/2" reg. box)"	"SA06HD0903F (3 1/2" reg. box)"
	Complete Shock Absorber	SA02HD11MF-B	SA03HD01MF-B	S04HD01MF-B	S05HD03MF-B	S06HD03MF-B

8"-10" Shock Absorbers

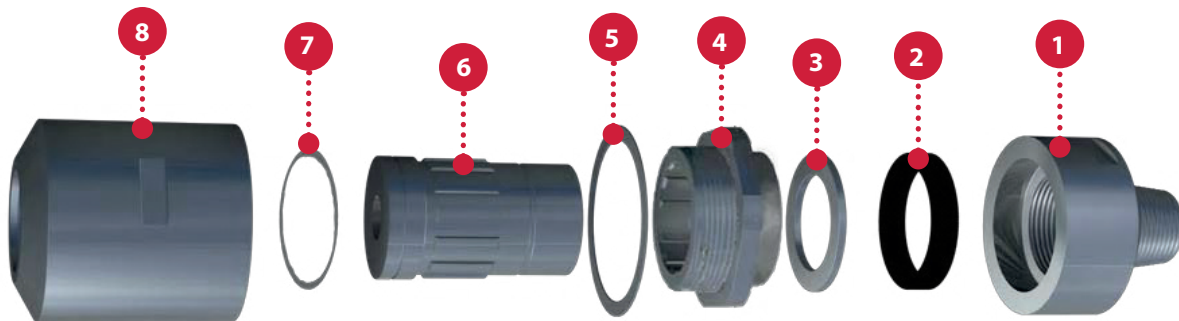


Size	HDSA8 (4 1/2 reg. pin)	HDSA10 (6 5/8 reg. pin)
Effective length	591 mm / 23.268 in.	635 mm / 25.000 in.
Outside diameter	178 mm / 7.008 in.	216 mm / 8.504 in.
Net weight	84 kg / 185.2 lbs	98 kg / 216.1 lbs

Ref	Description	Part number	
		HDSA8	HDSA10
1	Top connector	SA08ST0804M	SA10ST0880M
2	Buffer	SA08ST05	SA10ST05
3	Thrust Washer	SA08ST04	SA10ST04
4	Nut 'O' ring	SA08ST10	SA08ST10
5	Nut	SA08ST01	SA10ST01
6	Breakout Washer	SA08ST25	SA10ST25
7	Shaft	SA08ST02	SA10ST02
8	Shaft 'O' ring	SA08ST03	SA10ST03
9	Bottom Connector	SA08ST0904F	SA10ST0980F
	Complete Shock Absorber	SA08ST04MF	SA10ST080MF

Shock Absorbers

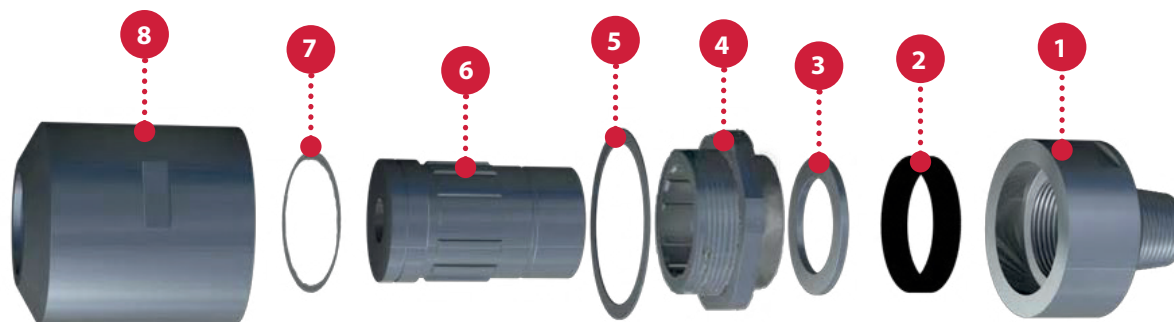
12" Shock Absorbers



Size	HDSA12
Effective length	724 mm / 28.5"
Outside diameter	254 mm / 10.00"
Net weight	229 kg / 504 lbs

Ref	Description	Part number
		HDSA12
1	Top Connector 6 5/8" API Reg Pin	SA12ST0880M
2	Buffer	SA12ST05
3	Thrust Washer	SA12ST04
4	Nut	SA12ST01
5	Breakout Washer	SA12ST25
6	Shaft	SA12ST02
7	Shaft 'O' Ring	SA12ST03
8	Bottom Connector 6 5/8" API Reg Box	SA12ST0980F
	Complete Shock Absorber	SA12ST080MF

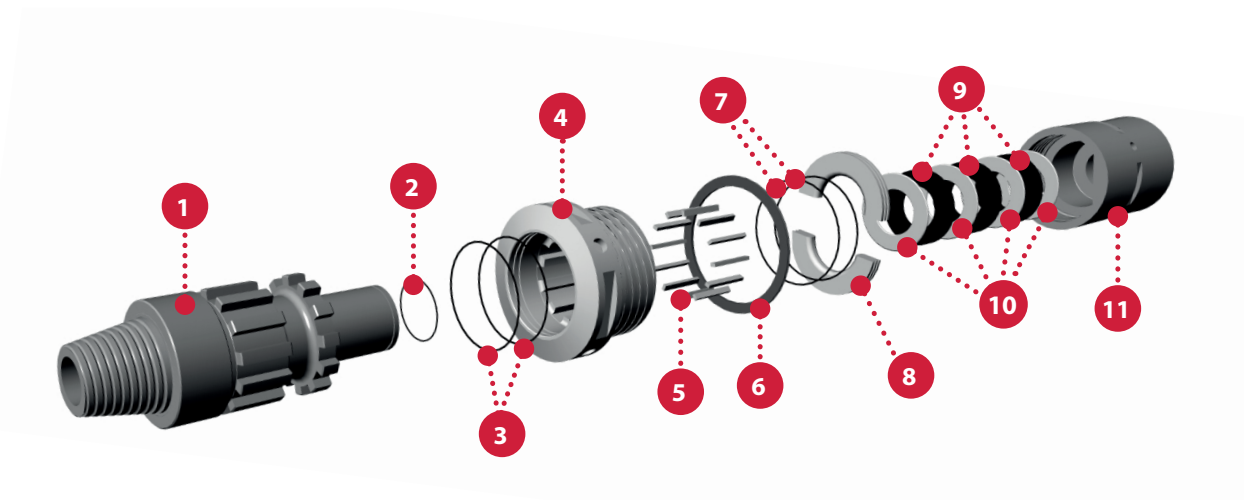
18" Shock Absorbers



Size	HDSA18
Effective length	711 mm / 28"v
Outside diameter	406 mm / 16"
Net weight	598 kg / 1316 lbs

Ref	Description	Part number
		HDSA18
1	Top Connector 8 5/8" API Reg Pin	SA18ST0882M
2	Buffer	SA18ST05
3	Thrust Washer	SA18ST04
4	Nut	SA18ST01
5	Breakout Washer	SA18ST25
6	Shaft	SA18ST02
7	Shaft 'O' Ring	SA18ST03
8	Bottom Connector 8 5/8" API Reg Box	SA18ST0982F
	Complete Shock Absorber	SA18ST82MF

30" Shock Absorbers



Size

HDSA30

Effective length	950 mm / 37.42"
Outside diameter	508 mm / 20.00"
Net weight	1256 kg / 2769.0 lbs

Ref	Description	Part number
		HDSA30
1	Shaft 10" BECO Pin	SA33HD0883M
2	Shaft 'O' Ring	9000425
3	Nut 'O' Ring x 2	9000426
4	Nut	SA33HD01
5	12off Drive Plates	SA33HD06
6	Breakout Washer	SA33HD25
7	Retainer 'O' Ring x 2	9000427
8	Split Retaining Ring	SA33HD11
9	Rubber Buffers x 3	SA33HD05
10	Steel Plates x 4	9000428
11	Bottom Connector 10" BECO Box	SA33HD0983F
	Complete Shock Absorber	SA33HD83MF