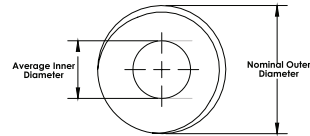
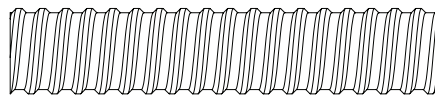


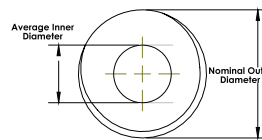
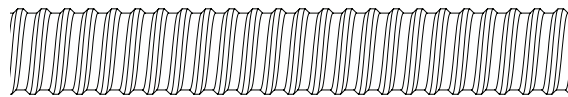


"T" Threaded Hollow Bar Systems

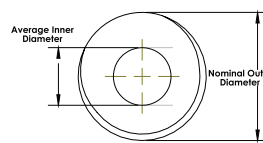
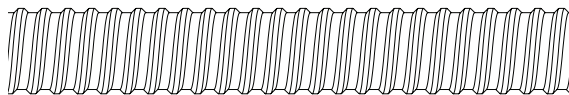
Bar Designation	Nominal Outer Diameter in (mm)	Average Inner Diameter in (mm)	Cross Sectional Area in ² (mm ²)	Ultimate Load kips (kN)	Yield Load kips (kN)	Approximate Major Thread Diameter in (mm)	Normal Weight lbs/ft (kg/m)
T30/11	1.18 30	0.43 11	0.64 413	72.0 320	58.5 260	1.30 33	2.2 3.3
T40/20	1.57 40	0.79 20	1.13 726	121.4 540	95.6 425	1.70 43.2	3.8 5.6
T40/16	1.57 40	0.63 16	1.40 903	148.4 660	118.1 525	1.70 43.2	4.8 7.2
T52/26	2.05 52	1.03 26	1.94 1251	208.0 925	170.0 756	2.20 55.9	6.7 9.9
T76N	3.00 76	2.00 51	3.35 2161	319.0 1418	252.0 1120	3.20 81.3	10.2 15.2
T76S	3.00 76	1.77 45	4.03 2600	418.0 1859	330.0 1467	3.20 81.3	13.2 19.7
T103/78	4.06 103	3.00 78	4.87 3142	510.5 2270	404.8 1800	4.20 106.7	17.0 25.3
T103/51	4.06 103	2.00 51	8.80 5677	823.0 3660	600.4 2670	4.20 106.7	30.0 44.6



T40/20



T40/16



T52

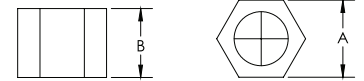
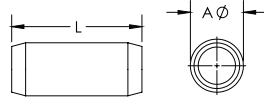




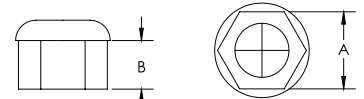
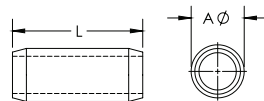
"T" Threaded Hollow Bar Couplers

Bar Designation	OD in (mm)	L in (mm)	Weight lbs (kg)
T30/11	1.15 38	4.2 105	1.0 0.45
T40/20	2.1 53	5.5 140	2.6 1.18
T40/16	2.1 53	5.5 140	2.6 1.18
T52/26	2.7 68.5	6.25 160	5.2 2.36
T76N	3.8 97	8.0 200	10.2 4.54
T76S	3.8 97	8.7 220	14.4 6.53
T103	5.2 132	11.5 292	30.5 13.8

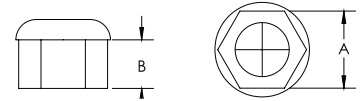
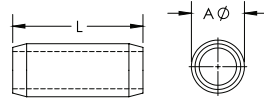
T40/20



T40/16



T52

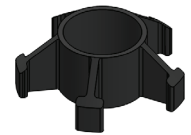
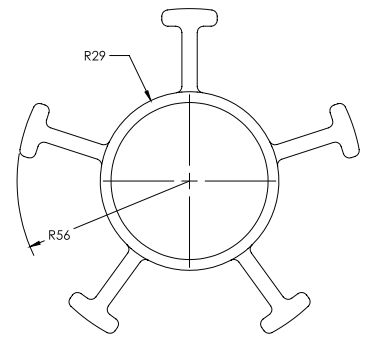


"T" Threaded Hollow Bar Nuts

Bar Designation	A in (mm)	B in (mm)	Weight lbs (kg)
T30/11	1.8 46.0	1.4 36.0	1.0 0.45
T40/20	2.5 64.0	2.0 50.0	2.7 1.22
T40/16	2.5 64.0	2.0 50.0	2.6 1.18
T52/26	3.2 81	2.5 63.5	5.1 2.31
T76N	4.0 102.0	3.1 80.0	6.2 2.81
T76S	4.0 102.0	3.1 80.0	6.2 2.81
T103	5.25 133.0	5.125 130	13.0 5.90

Hollow Bar Centralizers

Size	OD in (mm)	L in (mm)	Weight lbs (kg)
T30	2.75 70	1.40 35	0.5 0.21
	3.40 88	1.40 35	0.6 0.27
T40	3.40 88	1.50 40	0.8 0.37
T52	4.40 112	1.40 35	1.0 0.41
T76	5.00 130	1.75 45	2.0 0.89
T103	6.40 165	3.20 80	6.5 2.94



T52 Centralizer



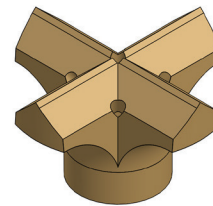
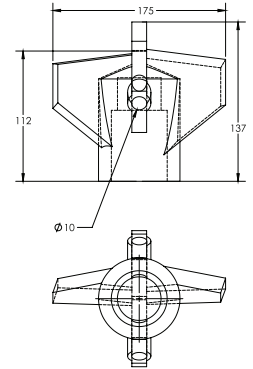


Carbide Cross, Steel Cross Cut, and Button Bits

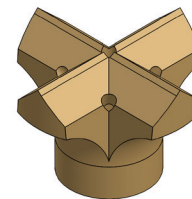
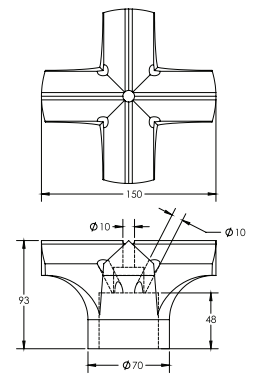
Bar Sizes	Size in (mm)	Weight lbs/unit (kg/unit)
T30	2.0 50.8	1.0 0.45
	2.5 63.5	2.0 0.91
	3.0 76.2	2.9 1.32
T40	2.5 63.5	2.0 0.91
	3.0 76.2	2.9 1.32
	3.5 88.9	3.5 1.59
	4.0 101.6	5.5 2.49
	4.5 114.3	7.0 3.18
	5.0 127.0	10.5 4.76
T52	6.0 152.4	13.0 5.90
	4.5 114.3	7.0 3.18
	5.0 127.0	10.5 4.76
T76	6.0 152.4	13.0 5.90
	7.0 177.8	14.5 6.58
	8.0 203.2	16.0 7.26
	5.0 127.0	10.5 4.76



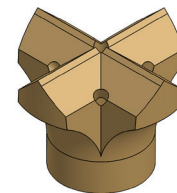
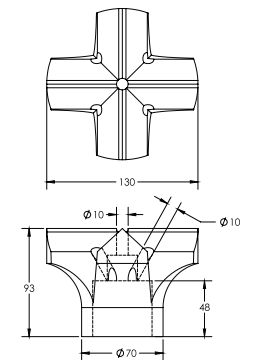
T-52 175mm Stepped Claybit



T-52 150mm Cross Cut



T-52 130mm Cross Cut



T-52 115mm Cross Cut

