

## CDS-R(S)

### Introducing the CDS-RS Overburden Drilling System

Drilling through loose material such as sand, clay or boulders can be problematic. Most of the Earth's surface is covered by this overburden material that may often collapse behind the drill bit resulting in loss of the hole and potential loss of the drill string.

Robit® concentric CDS-RS overburden drilling system range has been designed to allow continuous casing of a hole, through loose overburden material, down to and into solid bedrock. Using Robit's patented Airflow system, the CDS-RS's venturi effect vacuums cuttings away from the front of the drill bit and diverts the exhaust air back up the hole, greatly reducing the volume of air that would otherwise pass into the ground where it could cause potential problems.

The CDS-RS builds on the proven design of Robit® CDS and CDS-R Overburden Drilling Systems and is recommended for drilling in ground conditions where minimum disruption to sub structures and existing foundations is essential.

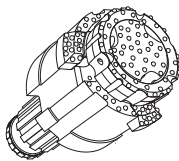


## CDS-R

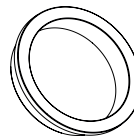
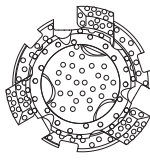
Order code

Order code	Pipe				Pilot bit				Wings [pcs]	Hammer [kg]	Weight [kg]
	[mm]	[in]	[mm]	[in]	[mm]	[in]	[mm]	[in]			
CDS 240R	273,0	10 ¾	13	0.512	296	13.307	240	9.450	3	8"	136.0
CDS 280R	324,0	12 ¾	19	0.748	345	13.583	281	11.063	3	10"	200.0 16.5
CDS 295R	324,0	12 ¾	8	0.315	344	13.543	295	11.615	3	10"	250.0 11.0
CDS 310R	355,6	14	22,2	0.874	385	15.157	310	12.204	3	10"	300.0 19.0
CDS 315R	355,6	14	22,2	0.874	385	15.157	315	12.402	3	10"	350.0 19.0
CDS 360R	406,4	16	25,4	1.000	438	17.244	360	14.173	3	12"	380.0 27.0
CDS 365R	406,4	16	19,4	0.764	438	17.244	365	14.370	3	14"	401.0 27.0
CDS 460R	508	20	25	0.984	540	21.260	460	18.110	3	14"	1350.0 40.0
CDS 510R	559	22	26	1.024	583	22.953	510,5	20.100	3	14-18"	1230.0 28.0
CDS 560R	610	24	20	0.787	640	25.197	560	22.047	3	18"	1350.0 30.0
CDS 610R	660	26	27	1.063	692	27.244	610	24.016	3	18-24"	1790.0 36.0
CDS 660R	762	30	25,4	1.000	792	31.180	661,5	26.040	3	18-24"	1970.0 49.0
CDS 745R	813	32	33	1.299	843	33.189	746	29.370	4	24"	2500.0 55.0
CDS 835R	914,4	36	42,4	1.669	950	37.400	835	32.874	4	24"	2860.0 70.0

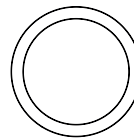
When ordering, information about casing diameters (OD and ID) is necessary.



CDS-R pilot bit



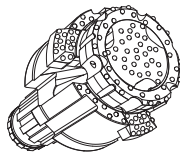
CDS-R impact shoe



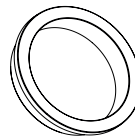
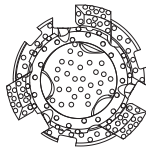
## CDS-RS

Order code	Pipe				Pilot bit				Wings [pcs]	Hammer [kg]	Weight [kg]
	[mm]	[in]	[mm]	[in]	[mm]	[in]	[mm]	[in]			
CDS 360RS	406,4	16	25,4	1.000	438	17.244	360	14.173	3	12"	380.0 27.0
CDS 365RS	406,4	16	19,4	0.764	438	17.244	365	14.370	3	14"	401.0 27.0
CDS 460RS	508	20	25	0.984	540	21.260	460	18.110	3	14"	1350.0 40.0
CDS 510RS	559	22	26	1.024	583	22.953	510,5	20.100	3	14-18"	1230.0 28.0
CDS 560RS	610	24	20	0.787	640	25.197	560	22.047	3	18"	1350.0 30.0
CDS 610RS	660	26	27	1.063	692	27.244	610	24.016	3	18-24"	1790.0 36.0
CDS 660RS	762	30	25,4	1.000	792	31.180	661,5	26.040	3	18-24"	1970.0 49.0
CDS 745RS	813	32	33	1.299	843	33.189	746	29.370	4	24"	2500.0 55.0
CDS 835RS	914,4	36	42,4	1.669	950	37.400	835	32.874	4	24"	2860.0 70.0

When ordering, information about casing diameters (OD and ID) is necessary.



CDS-RS pilot bit



CDS-RS impact shoe

