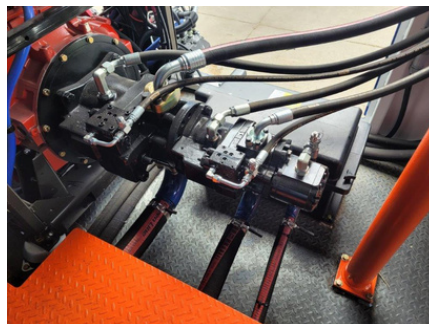




WIRELESS REMOTE CONTROL POWER UNIT

- Wireless control of all valve functions
- Electro-Proportional valve 500-4000 psi
- 2 Sectional directional valves assembly for multiple functions
- Cummins QSB6.7 TIER4 engine





WIRELESS REMOTE CONTROL POWER UNIT

Specifications

- Engine: Cummins QSB6.7 Tier4 -275HP @ 2300 rpm
- Hydraulic pump output
 - #1: 100 gpm @ 4000 psi - Open loop variable displacement
 - #2: 40 gpm @ 1850 psi - Open loop variable displacement
 - #3: 11 gpm @ 3000 psi - (Cooler fan)
- 2 Sectional directional valves assembly for multiple functions
- Remote control system: Wireless control of all functions, engine throttle, E-stop. Digital display of parameters
- Rotation Electro-Proportional valve - 500-4000 psi range
- Safety sensors for Low oil level, high temp oil, low fuel warning, filters status
- Lights: Exterior and Interior LED lights
- Fuel tank: 125 US gal / 475 L
- Hyd tank: 250 US gal / 945L
- Dimensions: 20' L x 8' W x 8'6" H
- Weight: 17,000 lbs (Wet)