



Technical Data

Shoulder to shoulder Length (Less Bit)	1163.5mm	45.81"
Weight (Less Bit)	98.7kg	218lbs
External Diameter	142mm	5.59"
Bit Shank	QL60	
Hole Range	152-219mm	
Connection Thread	API 3 1/2 Reg	

Air Consumption

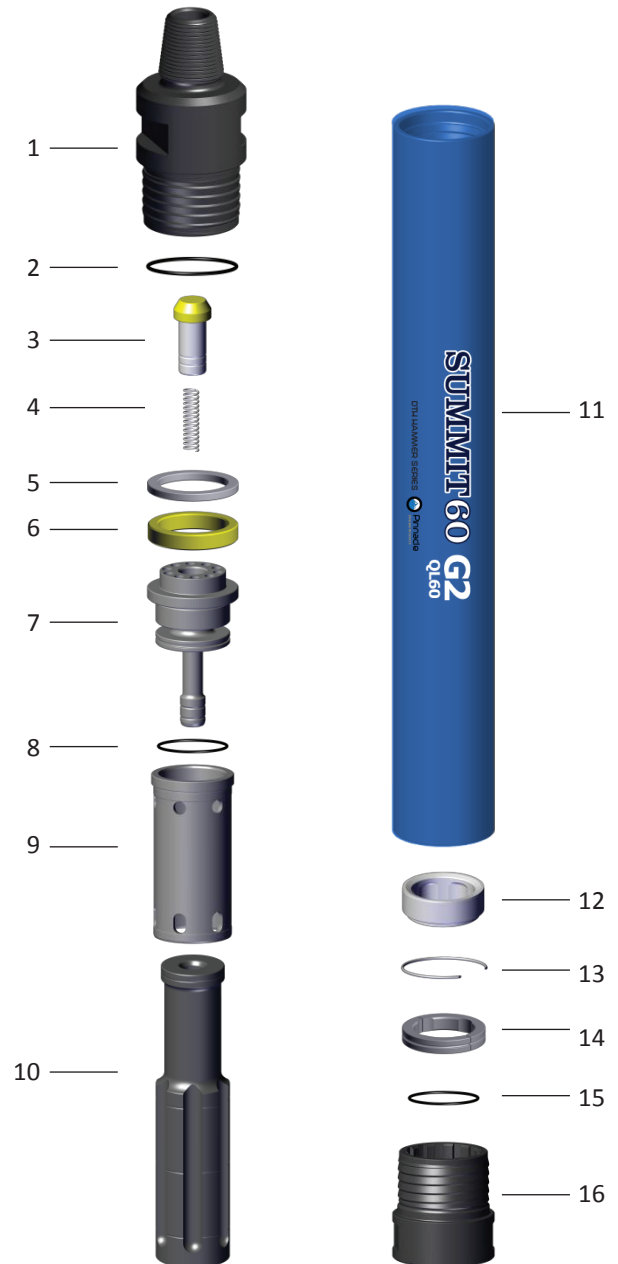
PSI	C.F.M.	BAR	M ³ /min
150	395	10.3	11.0
		13.8	14.9
250	625	17.2	17.5
		20.7	22.3
350	920	24.1	26.0

Description

- 1 Top Sub (API 3 1/5" Reg)
- 2 Top Sub O-ring
- 3 Check Valve
- 4 Check Valve Spring
- 5 Spacer Ring
- 6 Make Up Ring
- 7 Air Distributor
- 8 Air Distributor O-Ring
- 9 Cylinder
- 10 Piston
- 11 Case
- 12 Bearing
- 13 Stop Ring
- 14 Bit Retainer Ring
- 15 Bit Retainer O-ring
- 16 Driver Chuck

SUMMIT 60 G2 QL60

DTH HAMMER SERIES 



According to your request, the top sub can be made into two spanners, and come with protection buttons. An air controlling hole can be drilled on the valve to provide more efficient cuttings discharge.